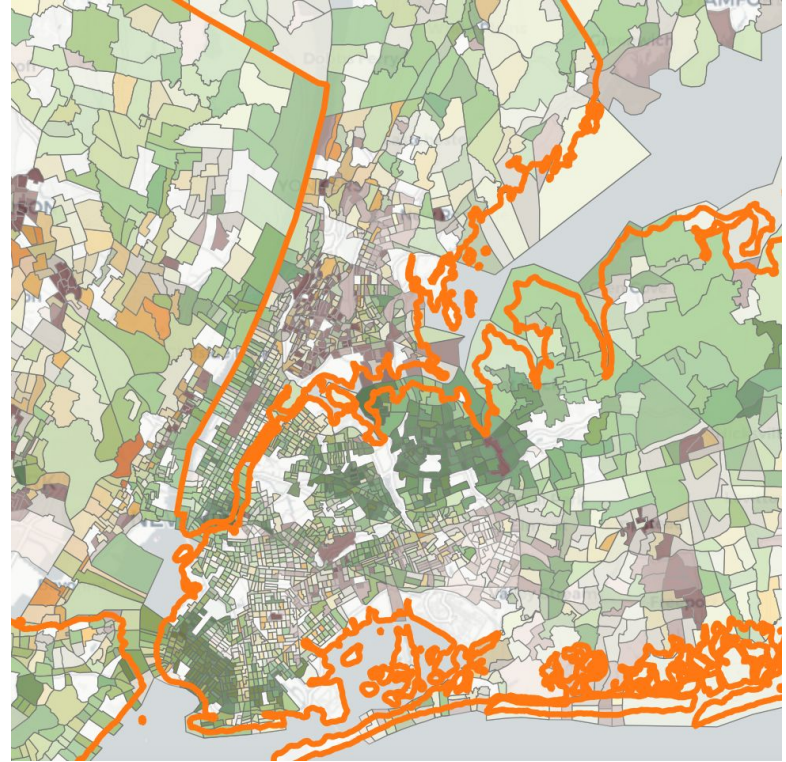


The Vital Voters Project

Finding and Connecting to the Voters
Campaigns Often Ignore



A record number of Americans voted in 2020. Among people who had voted in prior presidential elections, Joe Biden and Donald Trump were essentially tied. But among people who were voting for their first time, Biden did much better:

- Among people whose first federal vote was in 2018, Biden won by 16.7 points.
- And among people whose first presidential vote was in 2020, Biden won by 9.8 points.

These new and less regular voters are what we call Vital Voters.

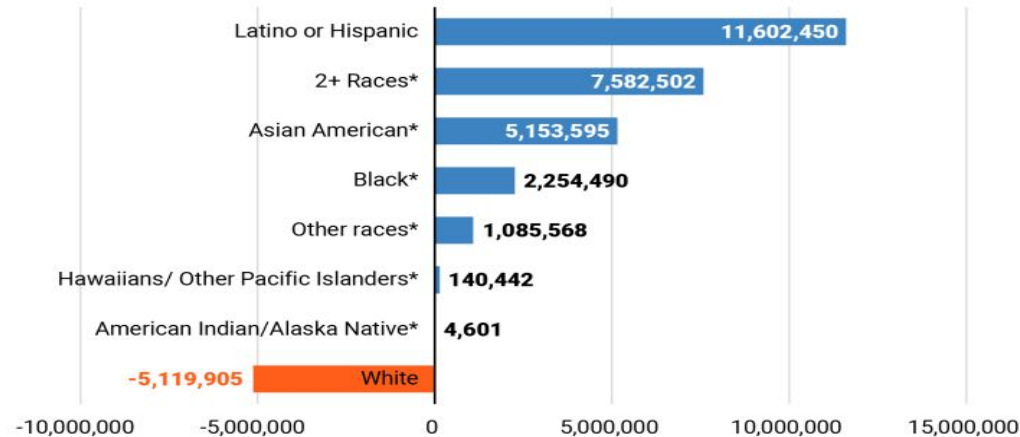
Many Vital Voters are often missed or ignored by campaigns and voter registration drives because they aren't in the "mainstream" of American society. They are often newly naturalized citizens or people for whom English is not the primary language spoken at home.

We may say we want to reach them, but our tools for voter outreach generally don't.

Until now.

Based on the 2020 census, the United States population is changing dramatically. The white population is rapidly shrinking while non-white groups are growing.

Figure 2. Change in US population for race and ethnic groups, 2010-2020



* non-Latino or Hispanic members of racial group

Source: William H. Frey analysis of 2010 and 2020 U.S. decennial censuses.

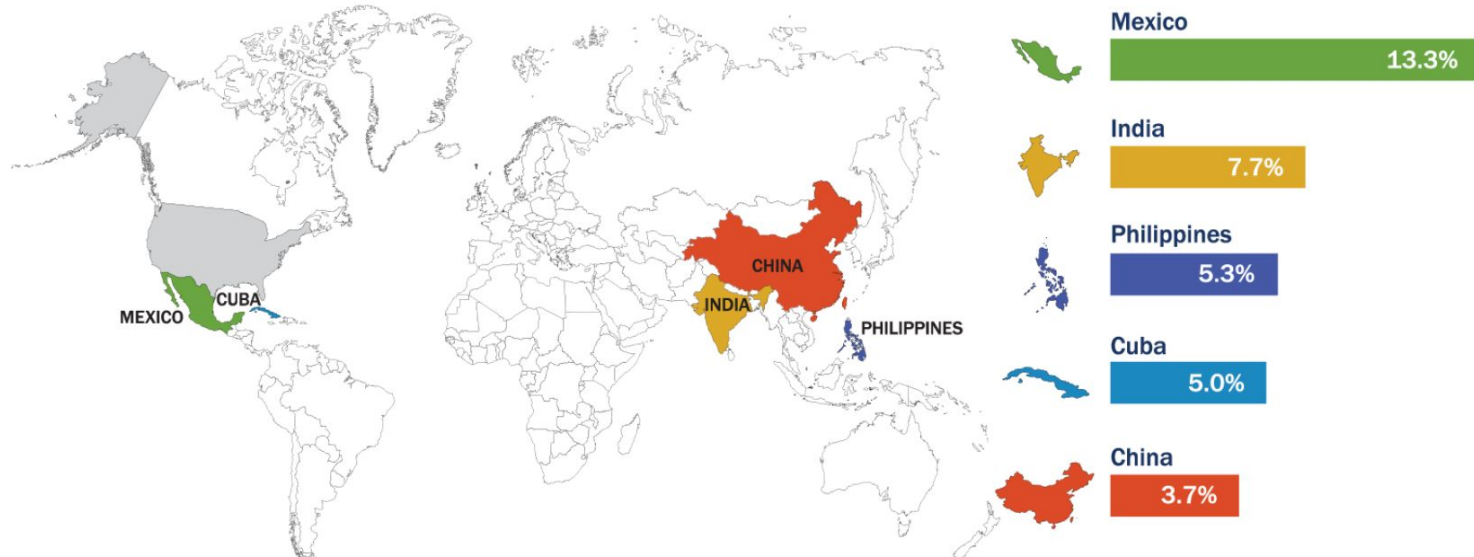
The number of
immigrant voters
is growing
exponentially

Between 2000 and 2020, the size of the immigrant electorate nearly doubled to 23.2 million.

On average, 860,000 naturalized citizens are sworn in each year. Even in the middle of a pandemic, 625,000 became citizens in 2020.

Countries of Birth

Among the top five countries of birth for people naturalizing in FY 2020, Mexico was the lead country, with 13.3% of all naturalizations, followed by India (7.7%), the Philippines (5.3%), Cuba (5%), and the People's Republic of China (3.7%). The top five countries of birth comprised 35% of the naturalized citizens in FY 2020.



Source: USCIS

Immigrant Voters Are Critical to Winning in Battleground States

In Georgia, AAPI turnout increased by 62,000 in 2020 from 2016. Biden won by fewer than 12,000 votes.

Source: TargetSmart

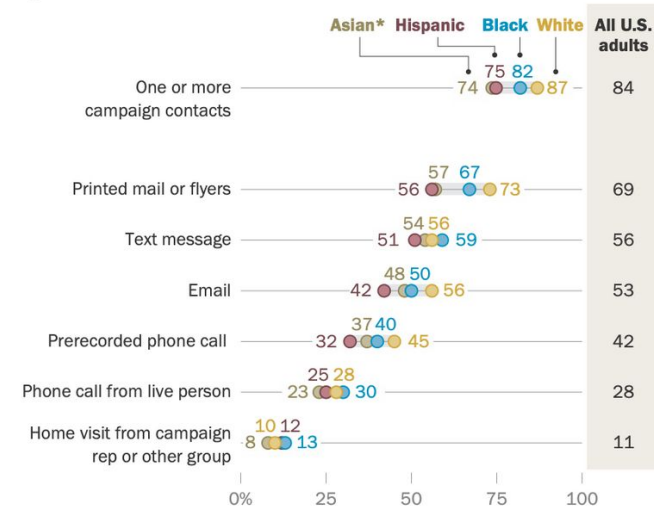
16% of eligible voters in Florida are naturalized citizens. 10% in Texas. 8% percent in Arizona.

Source: Pew Research Center

AAPI and Latino
voters received less
campaign contact
than White and Black
voters in
battleground states
in 2020

Majority of eligible voters overall said they received a campaign contact before 2020 election, with lower shares of Hispanics and Asians saying so

% of U.S. citizen adults who said they were contacted in the following ways by a candidate's campaign or a group supporting a candidate in the month before the November 2020 election



*Asian adults interviewed in English only.

Note: Based on U.S. citizen adults. White, Black and Asian adults include those who report being only one race and are not Hispanic. Hispanics are of any race. Contacts include those from any candidate or group supporting a candidate.

Source: Survey of U.S. adults conducted Nov. 12-17, 2020.

PEW RESEARCH CENTER

Take a look at the Chinese, Vietnamese, Korean, and Arabic populations. Consider the potential in Texas. Remember that Beto O'Rourke lost to Ted Cruz in 2018 by **214,921 votes**.

State	Total Population	Chinese	Low Eng Prof	Vietnamese	Low Eng Prof	Korean	Low Eng Prof	Arabic	Low Eng Prof
Arizona	6,946,685	34,917	17,440	23,792	13,695	9,983	4,777	25,342	9,736
Colorado	5,531,141	24,813	12,234	19,998	10,987	14,299	7,025	11,666	4,077
Florida	20,598,139	74,711	40,564	61,725	34,894	20,365	10,177	58,147	18,832
Georgia	10,297,484	49,100	25,311	45,853	28,138	47,552	25,302	18,798	6,303
Iowa	3,132,499	12,313	7,325	8,549	5,594	2,859	1,352	7,986	3,489
Michigan	9,957,488	50,366	25,309	14,373	8,117	15,463	7,434	138,749	58,453
Minnesota	5,527,358	23,981	11,427	23,106	13,270	5,333	2,221	13,635	4,845
Nevada	2,922,849	29,334	16,817	9,546	4,451	10,927	5,521	4,977	1,388
North Carolina	10,155,624	36,635	16,323	23,205	13,641	15,342	7,295	23,405	8,571
Ohio	11,641,879	46,268	22,851	13,277	7,157	10,772	5,120	44,747	15,644
Pennsylvania	12,956,593	88,410	48,055	36,618	22,561	28,390	13,980	35,767	13,499
Texas	27,885,195	170,446	82,010	219,569	124,500	58,077	28,742	86,165	30,812

Source: American Community Survey

Contrary to popular opinion, Asian Americans favor the Democratic Party

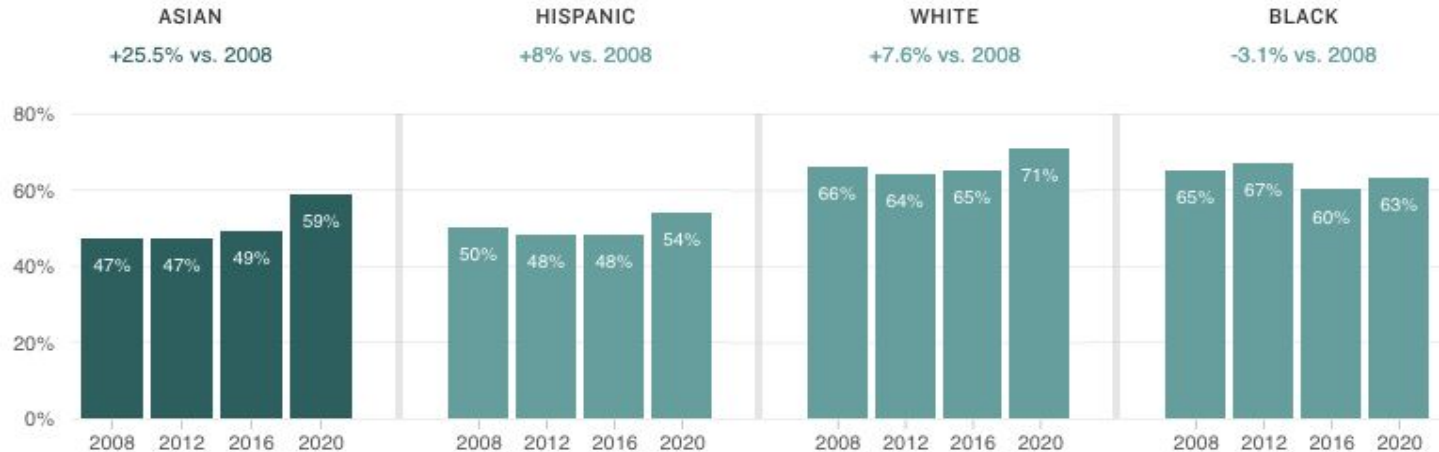
Table 2. Party Favorability Among Asian American Registered Voters, 2018

	Republican Party			Democratic Party		
	Unfavo- rable	No opinion/ never heard	Favo- rable	Unfavo- rable	No opinion/ never heard	Favo- rable
ASIAN AM	52%	14%	34%	28%	14%	58%
Asian Indian	54%	10%	36%	20%	8%	70%
Chinese	58%	24%	20%	28%	20%	52%
Filipino	44%	8%	48%	36%	12%	50%
Japanese	68%	20%%	14%	26%	18%	56%
Korean	56%	10%	32%	26%	10%	62%
Vietnamese	38%	14%	48%	24%	16%	60%

Source: 2018 Asian American Voter Survey (AAVS) by APIAVote and AAPI Data

AAPI voter turnout increased by 10 points in 2020. Latino voters by 6 points.

Percentage of citizens over 18 that voted in the presidential elections from 2008-2020, broken down by race or ethnicity




Source: [U.S. Census Bureau](#)

Credit: Ruth Talbot/NPR

The tools campaigns use to target voters are blind to these opportunities. At best, they use Spanish-sounding surnames as a way to “find” Latinos, with no regard to country of origin.

 DNC VOTEBuilder

 VOTEBuilder Training Site LOGOUT

[Voter Registration](#) [My Voters](#) [My Campaign](#)

[My List](#) [Classic Look](#) [Give us Feedback](#) [Tour the New Look](#) [Help Wiki](#)

[Load a Saved List](#) [Save As](#) [New Search](#)

My List

50 People
50 Doors
50 Mailboxes

[Add People](#) [Remove People](#) [Narrow People](#)

[Print](#) [Letters](#) [Labels](#) [Emails](#) [Calls](#) [Export](#) [MiniVAN](#) [Counts](#) [Cut Turf](#) [HH Wiz](#) [Split](#) [Sample](#)

> Description

Last Name First Name

[Remember Me](#) [Refresh](#)

Name ^	City	VANID	Phone	Age
Alexander, Brandi H	Aurora	6107518		28
Altser, Philip T	Fort Defiance	3743010	(555) 542-4873	76
Bailey, Kristen E	Lawler	5923249	(555) 519-0341	29
Barnes, Timothy R	Chatham	3953869		45
Bingen, Peggy L	Bettendorf	3880210	(555) 795-9961	61
Blochowicz, Dottie A	Sharpes	2784518	(555) 760-4016	37
Bradish, Peggy E	Cheyenne	4070735	(555) 596-4998	62
Brandt, Vickie A	Lawler	3710427	(555) 793-1376	51
Brodbeck, Pamela L	Lawler	3448763	(555) 527-0870	58

You can't ask
Votebuilder to find
voters by country
of origin or
language spoken
in the home.



Erik J Raser-Schramm



Voter File VANID

Go

Stand...

Script

Form

Clear

Print

Save

> Addresses

> Email

> Phones

> Activist Codes

> Salutation

> Self-Reported Demographics

> Polling Location

> Survey Responses

> Contact History

> Blast Emails

> Early Voting

> Voting History

> Notes

> Voter File VANID

> Vital Stats & Contact Preferences

> Districts

> Also in Household

> Likely Party

> Actions

Save All

Save Page Layout

> Program Type

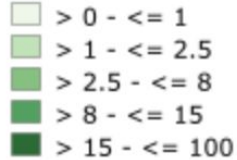
By combining 2020 US Census data with 2020 election data, the Vital Voters Project makes it possible for campaigns to see where such voters are geographically concentrated, either by census tract or precinct.

Legend

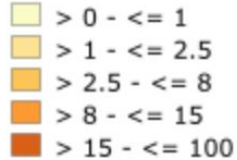
NY State Boundary

States

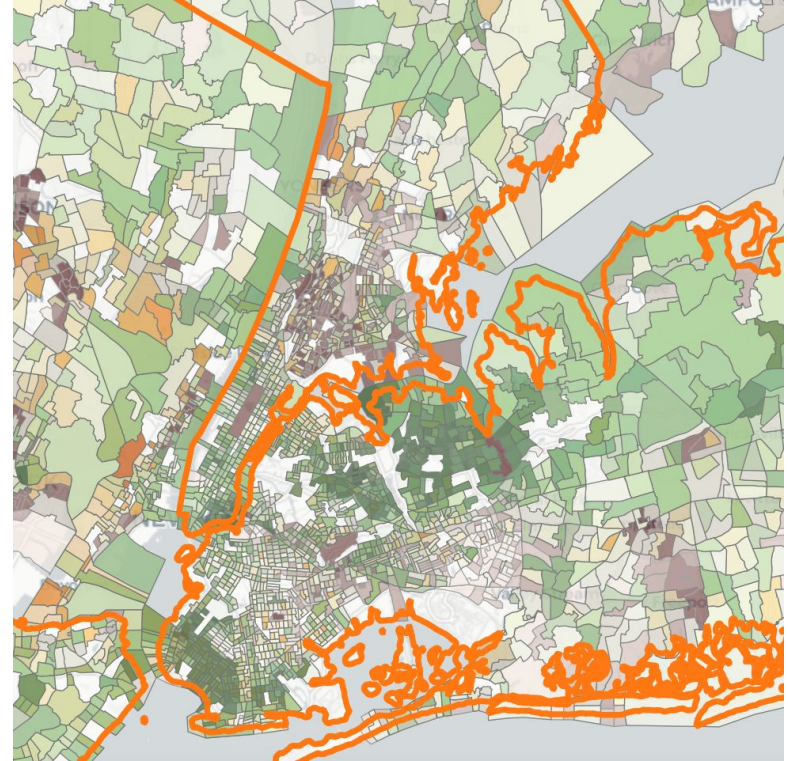
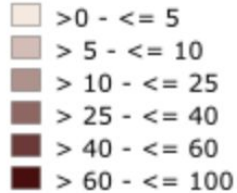
Tracts Percentage Chinese



Tracts Percentage Arabic



Tracts Percentage Spanish



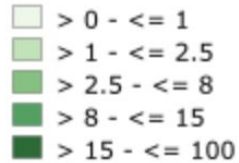
Armed with this information, campaigns can better target these voters with language- and culturally-appropriate materials and volunteers.

Legend

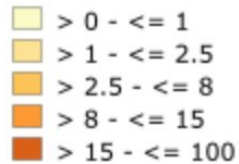
NY State Boundary

States

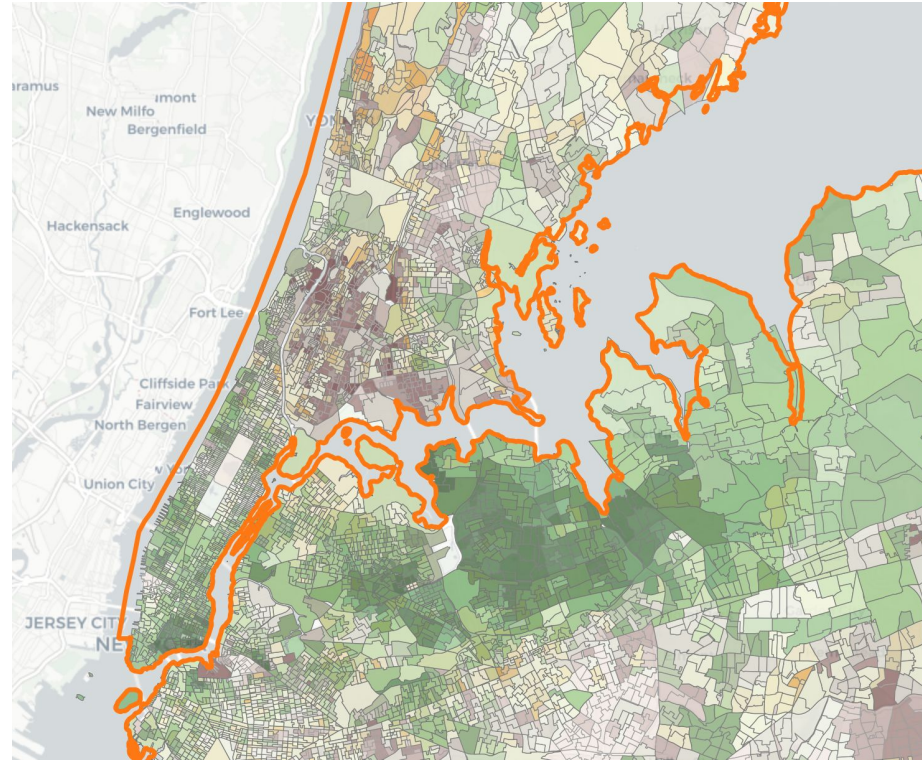
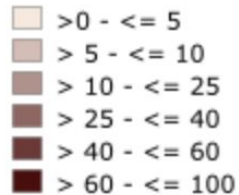
Precincts Percentage Chinese



Precincts Percentage Arabic



Precincts Percentage Spanish



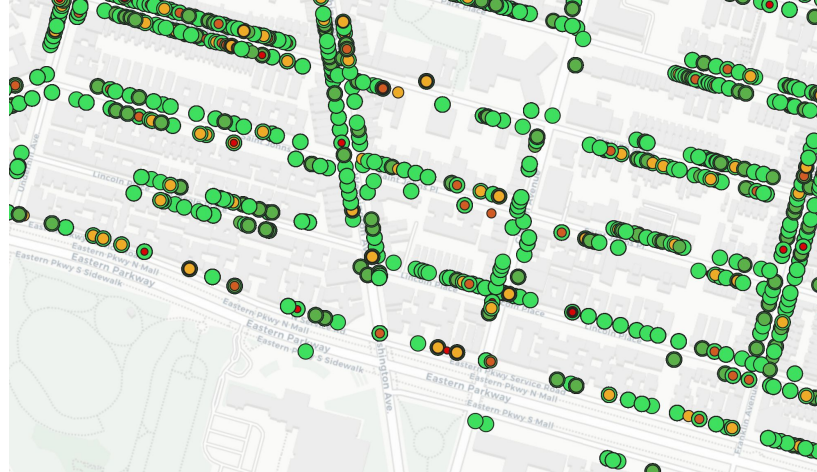
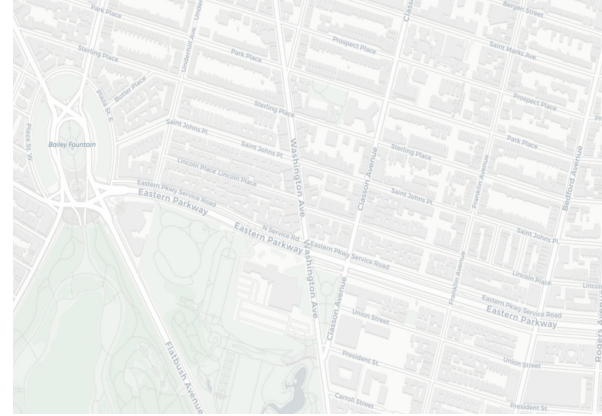
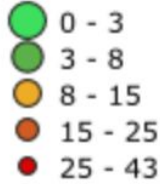
We are working on going further, to integrate data about individual voters based on where they live and how often they vote. We are also planning to include breakdowns by age, to better find younger voters.

Legend

NY State Boundary

States

Voters - vote count



Eventually, a campaign or voter registration group could use this data to zero in on where irregular and newly registered voters are concentrated, as well as where voter engagement levels are lower or higher.



Next steps:

- We're looking for partners who want to use these maps in their campaigns
- We're looking for funding to continue building and refining these tools

Contact: Annabel Park,
annabelspark@gmail.com

240-883-8647

Micah Sifry, msifry@gmail.com

